

# WALKS IN KIMPTON PARISH

## WALK 4 SHORT WALK TO KIMPTON HOO

**3.5km/2¼ml** circular walk with open views along footpaths and private road. Stiles.

*(note: as some of this walk is across fields, it might be best to avoid walking in late August/September when fields are being ploughed).*

**Approx time:** 1 hour

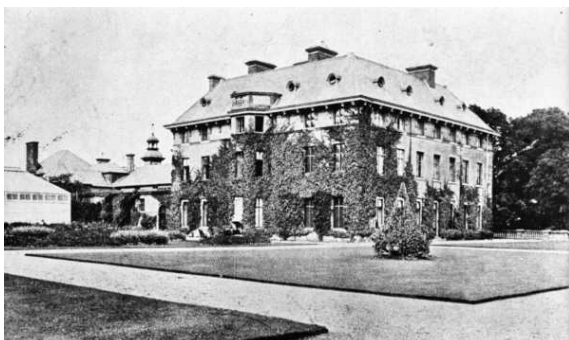
**Park** in Parkfield Sports Ground car park – grid ref: TL176186

- ❖ Walk up to and past the tennis courts on your right and go through the kissing gate on to Park Lane.
- ❖ Turn right up the lane and when you reach The Park go over the stile, then through the kissing gate. (Stile not suitable for dogs. Use path at the bottom of the field as an alternative). Beware – there are often sheep in this field.
- ❖ Cross the field heading for the stile which leads through the woods – look out for green woodpeckers with their noisy “yaffle” as they fly off. They can often be seen in the long grass looking for ants.
- ❖ Go through the woods and turn left at the end.
- ❖ After about 300m, a path to the right is marked; take this and go past the wood and the newly planted wood towards the main road at Cuckolds Cross. This is on the Parish Boundary – the name “Cuckold” is often given to a place or feature on a boundary but it is not clear why.
- ❖ You will see the path slightly to the right at the other side of the road.



### TAKE CARE CROSSING THE ROAD

- ❖ Follow the path round the house and along the edge of the field.
- ❖ The path turns sharply to the right, then when it reaches the wood in the middle of the field, turns left.
- ❖ When you reach the top of the field, turn right towards a barn. With this on your left, carry on to the private road ahead.
- ❖ At the road, take a small detour to look at the cricket pavilion, once sited in the lower Recreation Ground in Kimpton, when it was a thatched building and now used by private clubs and often by celebrities!



- ❖ Beyond that, out of sight, was Kimpton Hoo. This was a large elegant mansion and was the home of the Dacre family for many years. It was demolished in the 1950's and is now the site of some large modern houses.

- ❖ Walk right down the private road, which is also a public right of way.

The verges on this road provide a beautiful display in summer of field scabious,

knapweed and other wild flowers which attract bees and butterflies. You will reach the main road at the end.

**TAKE CARE CROSSING THE ROAD – BLIND CORNERS.**

- ❖ Walk up the path signposted to the Parkfield Sports Ground. The house on your left is a former vicarage, the present one being on the High Street.

*This series of walks has been produced by Catherine Tees, Kimpton Rights of Way Committee.*

*It is our aim to keep rights of way in the Parish clear of obstructions, well marked and easy to walk. We hope that this walk will encourage you to use the paths in the Parish and explore our beautiful countryside. Please report any errors in directions, or any problems with paths to Catherine Tees, via [www.kimpton.org.uk](http://www.kimpton.org.uk) or to Hertfordshire County Council Rights of Way Section.*

August 2008